



Characteristics:

Thermally bonded textile batt for thermal and acoustic insulation in the construction industry.

Material Content:

Recycled textile waste with 80% cotton fibres.

Properties:



Regular Use:

Insulation for the exterior load-bearing walls of prefabricated buildings, internal partitions, trusses and ceiling structures. Interior insulation for suspended ceilings and lamellar design panels.



TexBatt 37 Bio



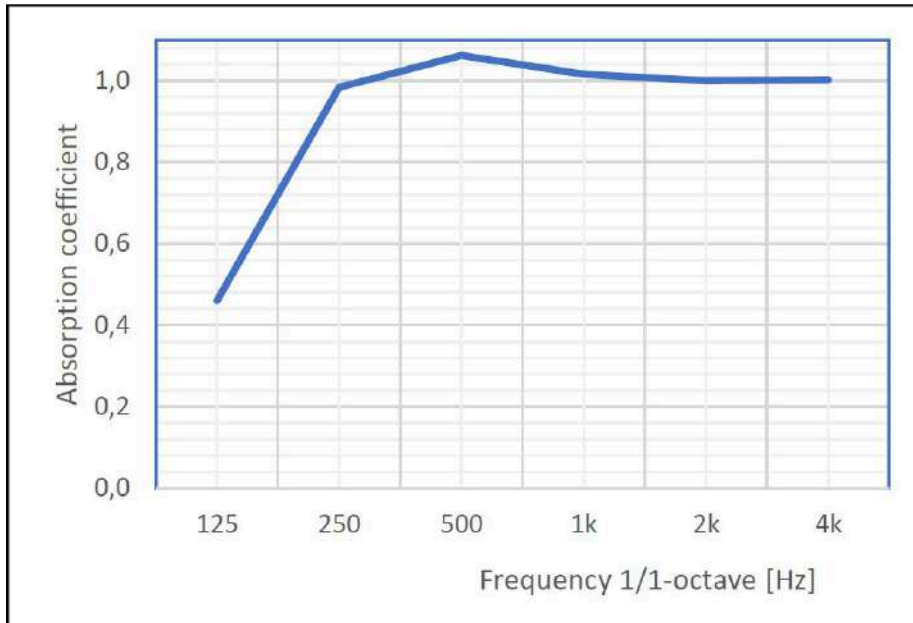
Technical parameters

PHYSICAL PROPERTIES	Units	50mm	75mm	100mm			
Density [ρ] / EN 1602	kg/m ³	25					
Thickness / EN 823	mm	50	75	100			
Custom Thickness	Custom production is possible up to 200mm						
ACOUSTIC PROPERTIES							
Measurement of sound absorption in a reverberation room according to EN ISO 354:2003. 1/1 octave Sound Absorption coefficients α_s	Hz	125	250	500	1000	2000	4000
	α_s	0,5	1,0	1,1	1,0	1,0	1,0
Sound Absorbers for use in buildings according to EN ISO 11654:1997 (Weighted sound absorption coefficient)	α_s	1.00					
Sound absorption class	A						
Sound insulation of building elements according to EN ISO 10140 & EN ISO 717-1	Rw (C; Ctr)	41 (-4;-10) dB					
THERMAL INSULATION PROPERTIES							
Thermal conductivity[λ] EN 12667	W/m.K	0,037					
FIRE CLASSIFICATION							
Reaction to fire EN ISO 13501	E						
EMISSIONS							
Life Cycle Assessment (LCA/A1-A3 for 1 m ² of 1 R-value)	-0,555 kg CO ₂ -eq						
VOC	A+						
QUALITY MANAGEMENT SYSTEM							
ISO	ISO 9001, ISO 14001, ISO 45001 & ISO 50001						
DIMENSIONS							
Width (up to)	mm	600					
Length (up to)	mm	1200					
PACKAGING & STORAGE							
Packing	The Batts are stored on single use wooden pallets						
Pallet dimension (PXL)	mm	1200x1200x2500					
Storage	In covered, clean and dry spaces						
No. of pcs per pallet	pcs	96	64	48			
Surface in m ² per pallet	m ²	69,12	46,08	34,56			
Surface in m ² per full truck load	m ²	1.520,64	1013,76	760,32			

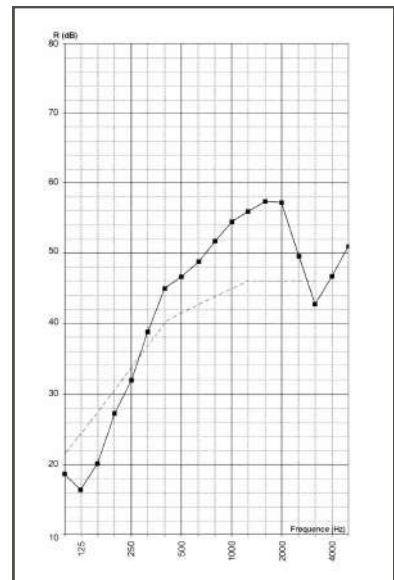
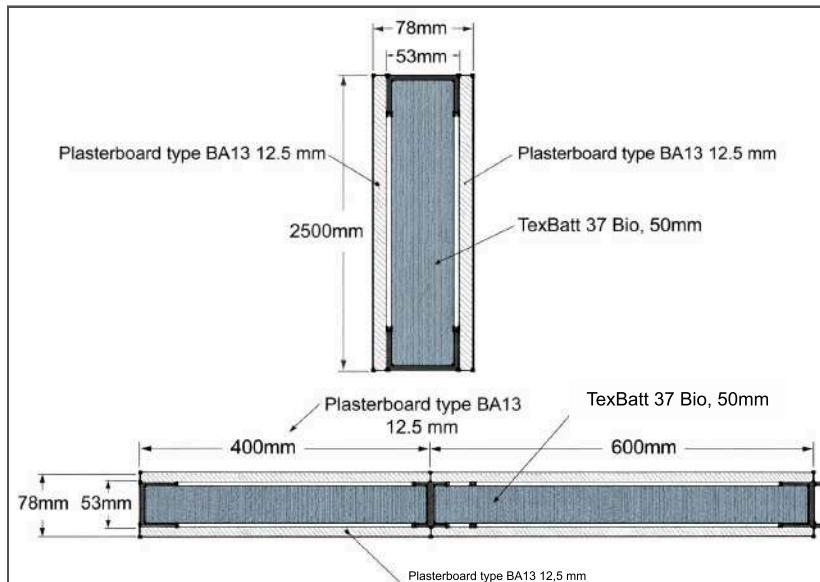
TexBatt 37 Bio

Acoustic Properties

Sound absorption - EN ISO 354:2003



Sound insulation EN ISO 717-1



..... Typical RW Curve

Weighted airborne sound reduction index:

Evaluated according to EN ISO 717-1

Rw (C; Ctr) = 41 dB (-4 dB; -10 dB)